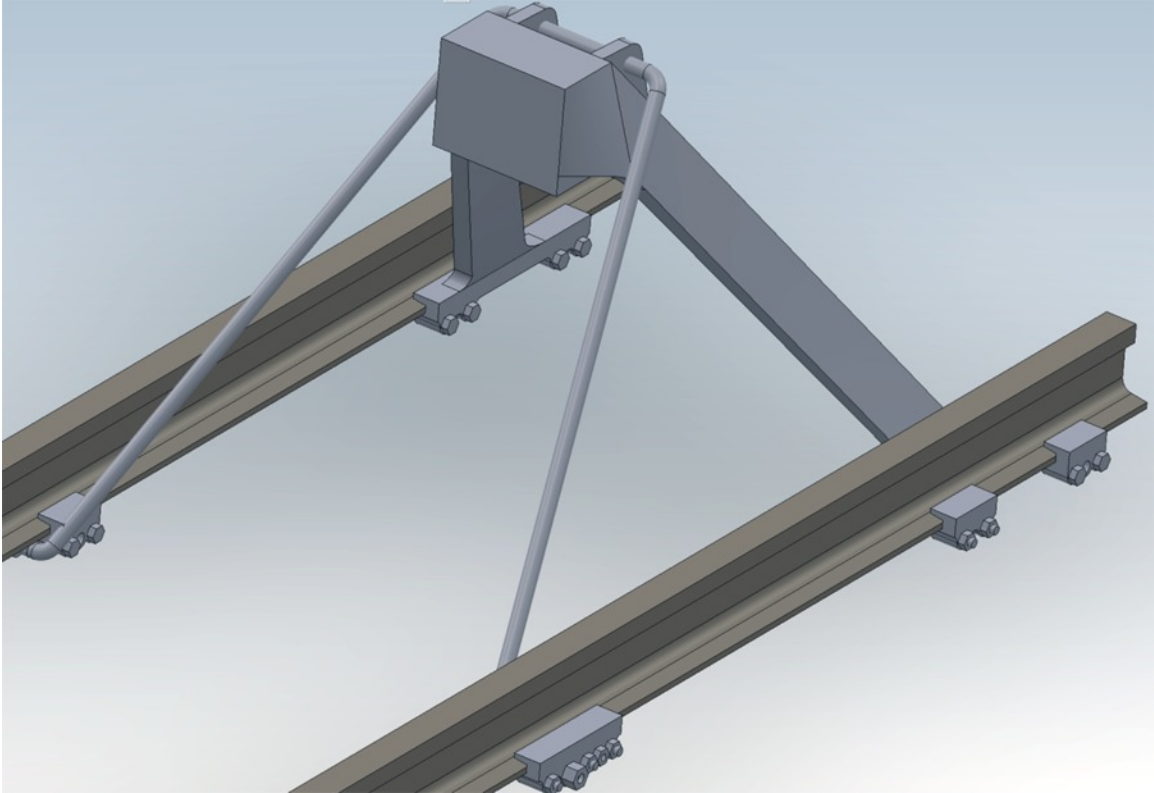


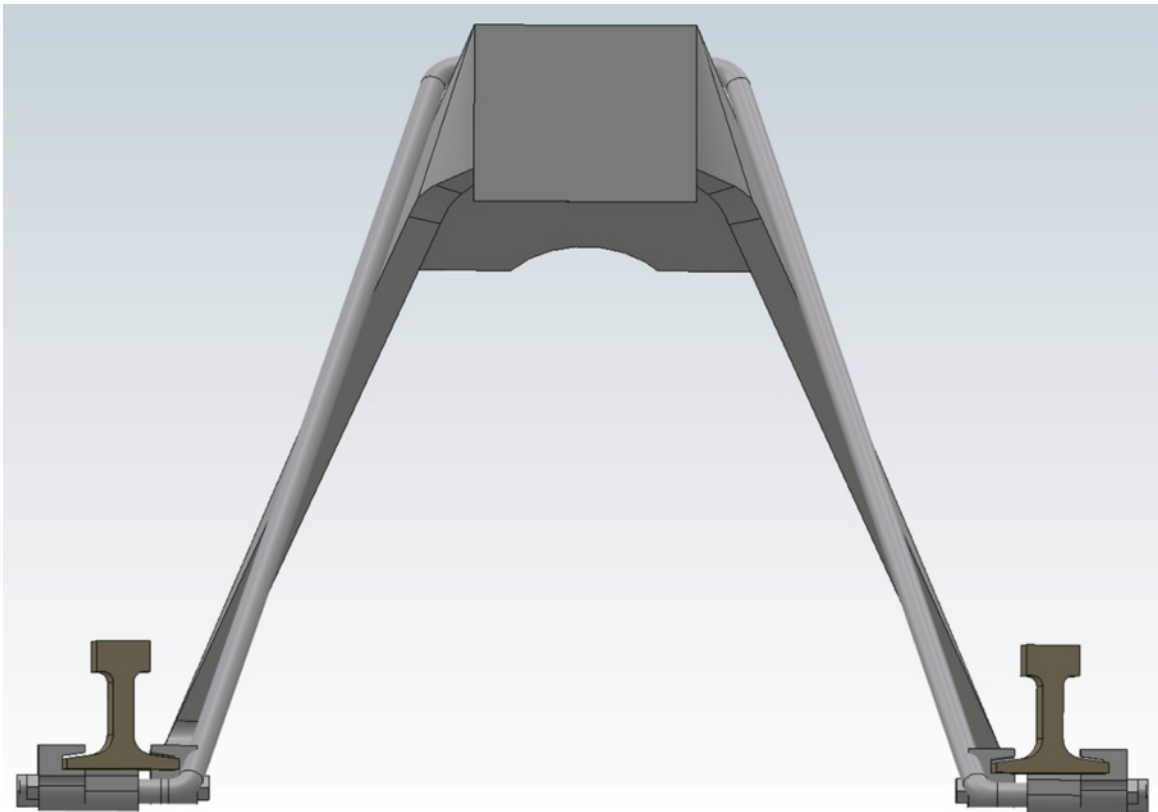
Rear view.

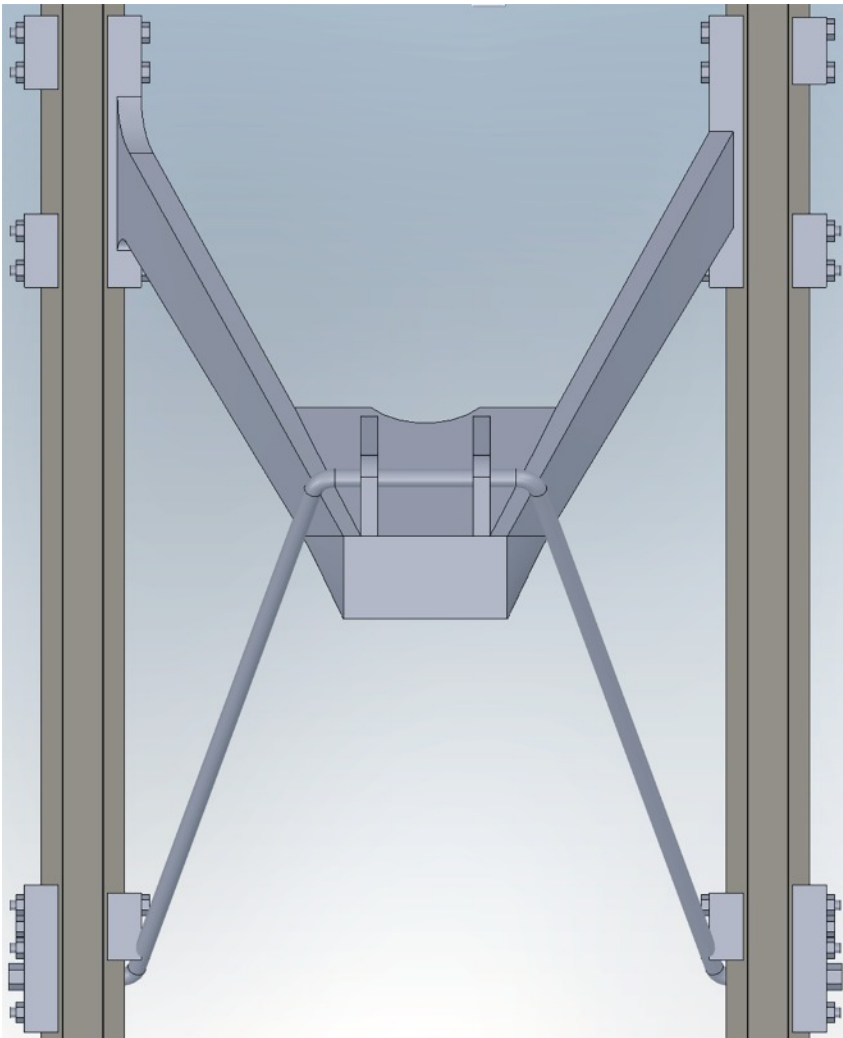
Designed for code 100 track, however, larger codes may be used by removing or filing the pieces shown above in red. Once glued and ballasted in place you will not notice the difference.

BUDA Number 30 Clamp Type Bumping Post O and S Scale

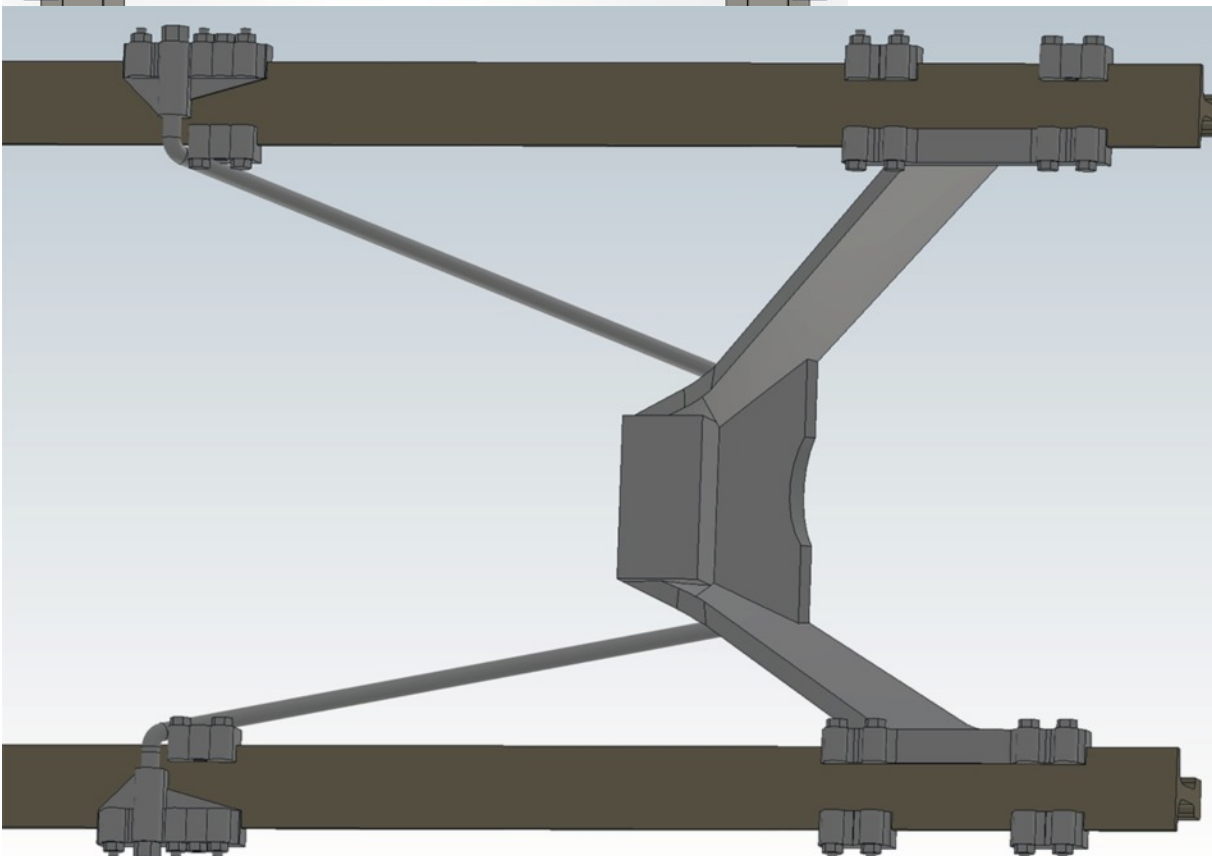


Side and head on images.





**Top down and
looking up
from under
track.**





DIRECTIONS

BUDA No. 30 Clamp Type Steel Bumping Post

The BUDA No. 30 Bumping Post is shipped in 3 bundles or pieces.

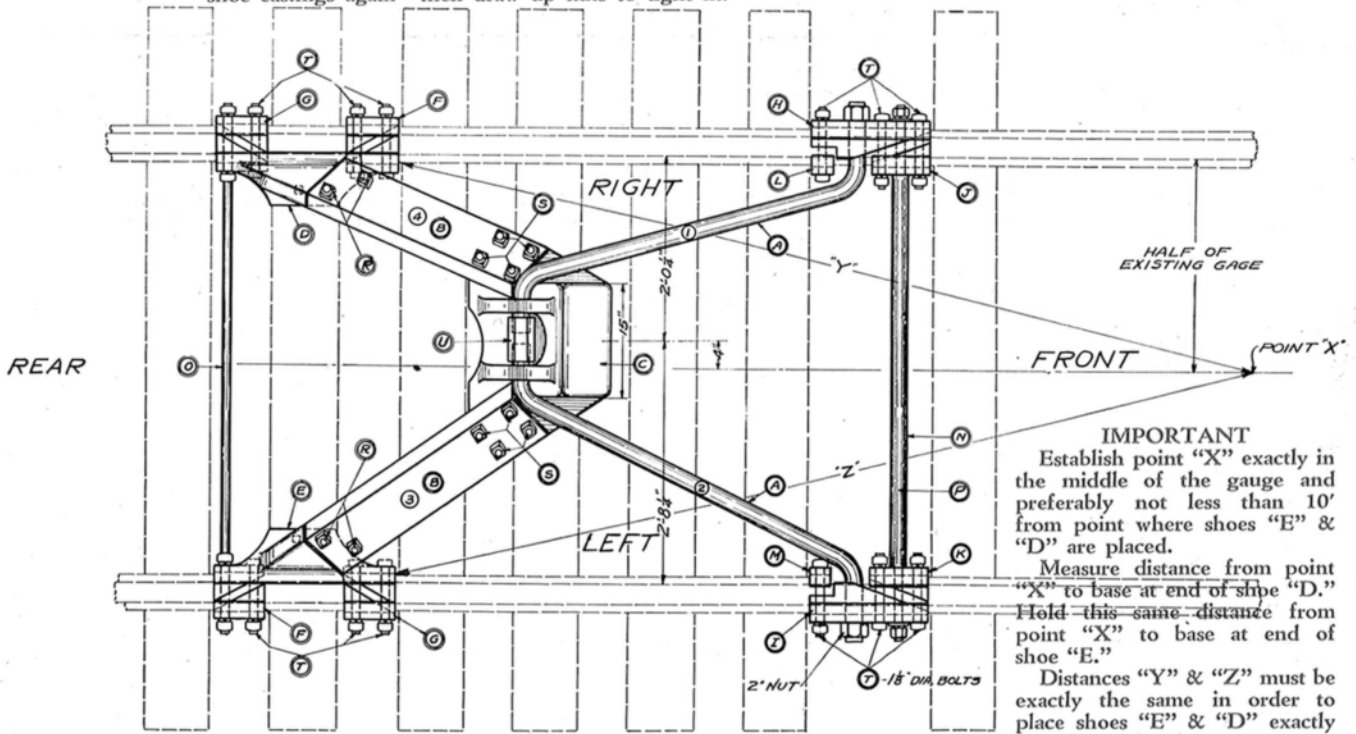
- 1—Head, 2 Channels, 2 Rear Shoes with clamps and bolts.
- 2—Right Hand front members No. 1 with clamps and bolts and 1 tie rod.
- 3—Left Hand front members No. 2 with clamps and bolts, 1 tie rod, spreader pipe, and washers.

NOTE: To install post remove Left Shoe Castings "E" from Channel "B." Raise head to proper position and slide shoe "D" still attached to channel on base of rail. Put on clamps "F" and "G" and tighten bolts, and post will stay in position. (See note below in red.) Then slide other shoe on base of rail. Put on clamps and bolt to rail and channel, making sure that shoes are directly opposite each other. The bumping post head should then be in its proper position.

Next take the Right and Left front rods "A" and attach them to the bumping post head with the large 2" double nut "U" which has a Right and Left thread. Next attach the front shoes "H" and "I" and clamps to the base of the rail and tighten all bolts. After all bolts are tight, attach the spread rod "O" and tie rod "P," placing the pipe spreader "N" on the front rod. Use washers on tie rod "P" at end of pipe "N" to fill in space between clamps "J" and "K" in order to maintain gauge when nuts on tie rod are tightened.

In order to get maximum strength place ties close as possible to rear clamps as shown on sketch.

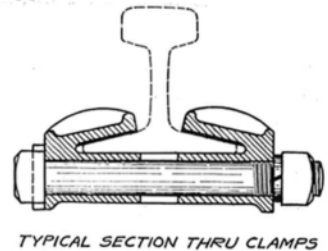
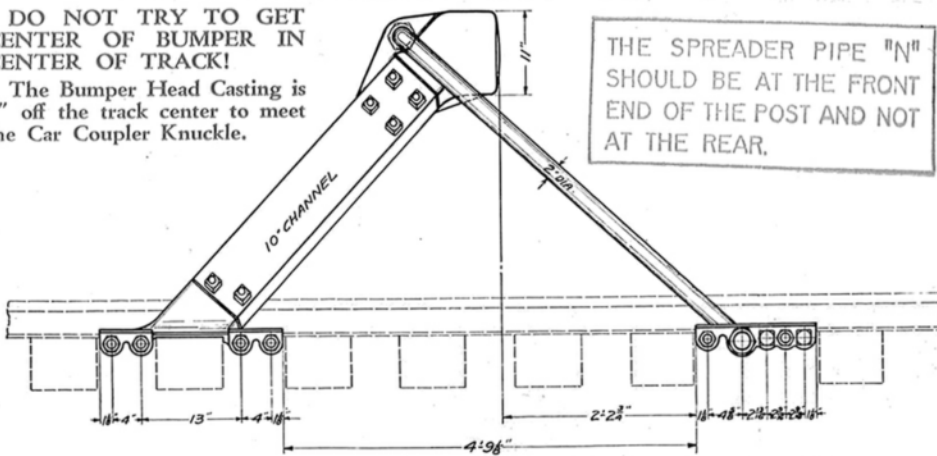
IMPORTANT: All shoe and clamp castings must be sledged securely into place on the rail—then tighten bolts—then sledge shoe castings again—then draw up nuts to tight fit.



DO NOT TRY TO GET CENTER OF BUMPER IN CENTER OF TRACK!

The Bumper Head Casting is 4" off the track center to meet the Car Coupler Knuckle.

THE SPREADER PIPE "N" SHOULD BE AT THE FRONT END OF THE POST AND NOT AT THE REAR.



THE BUDA COMPANY
HARVEY [CHICAGO] [SUBURB] ILLINOIS